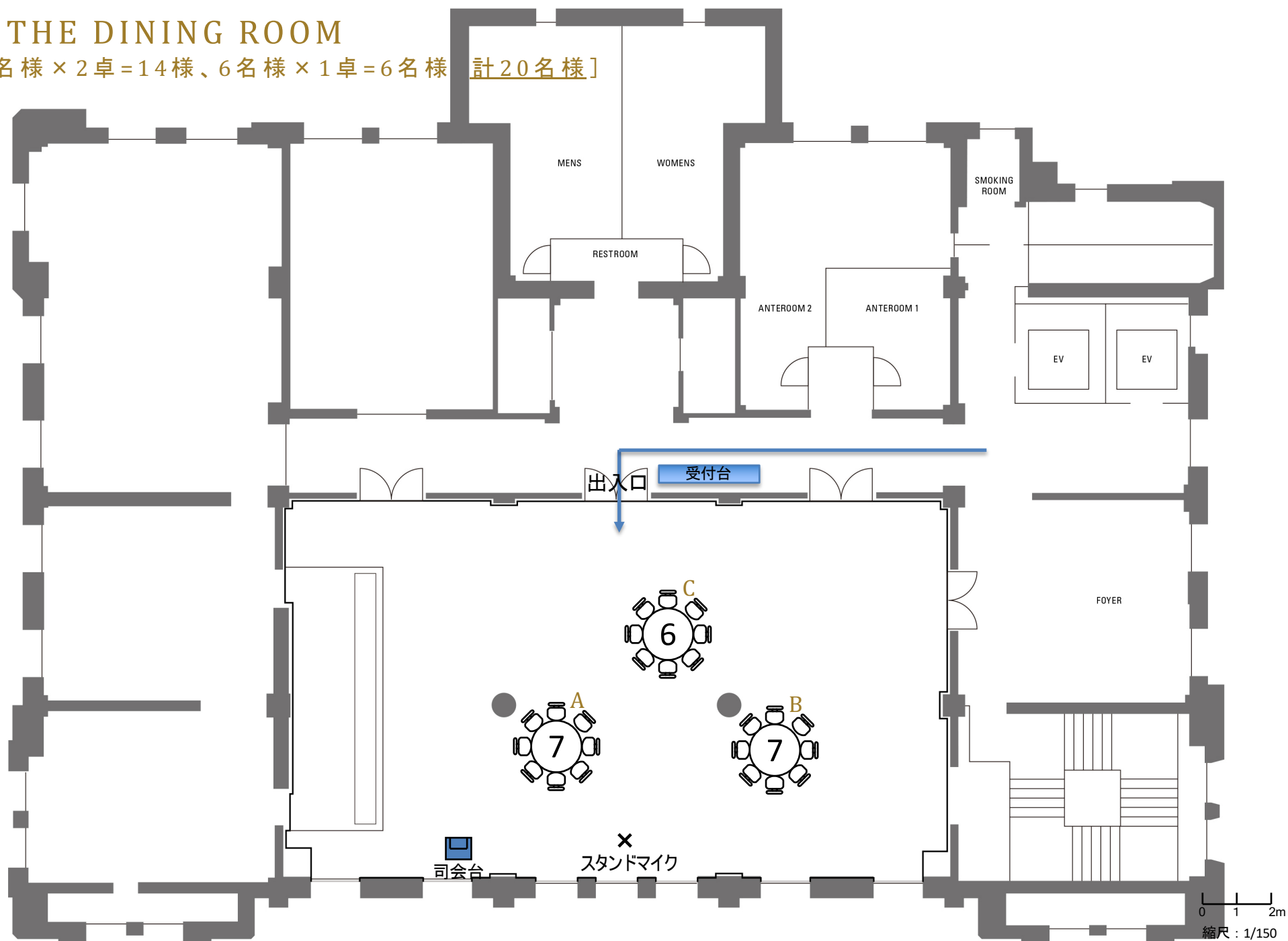


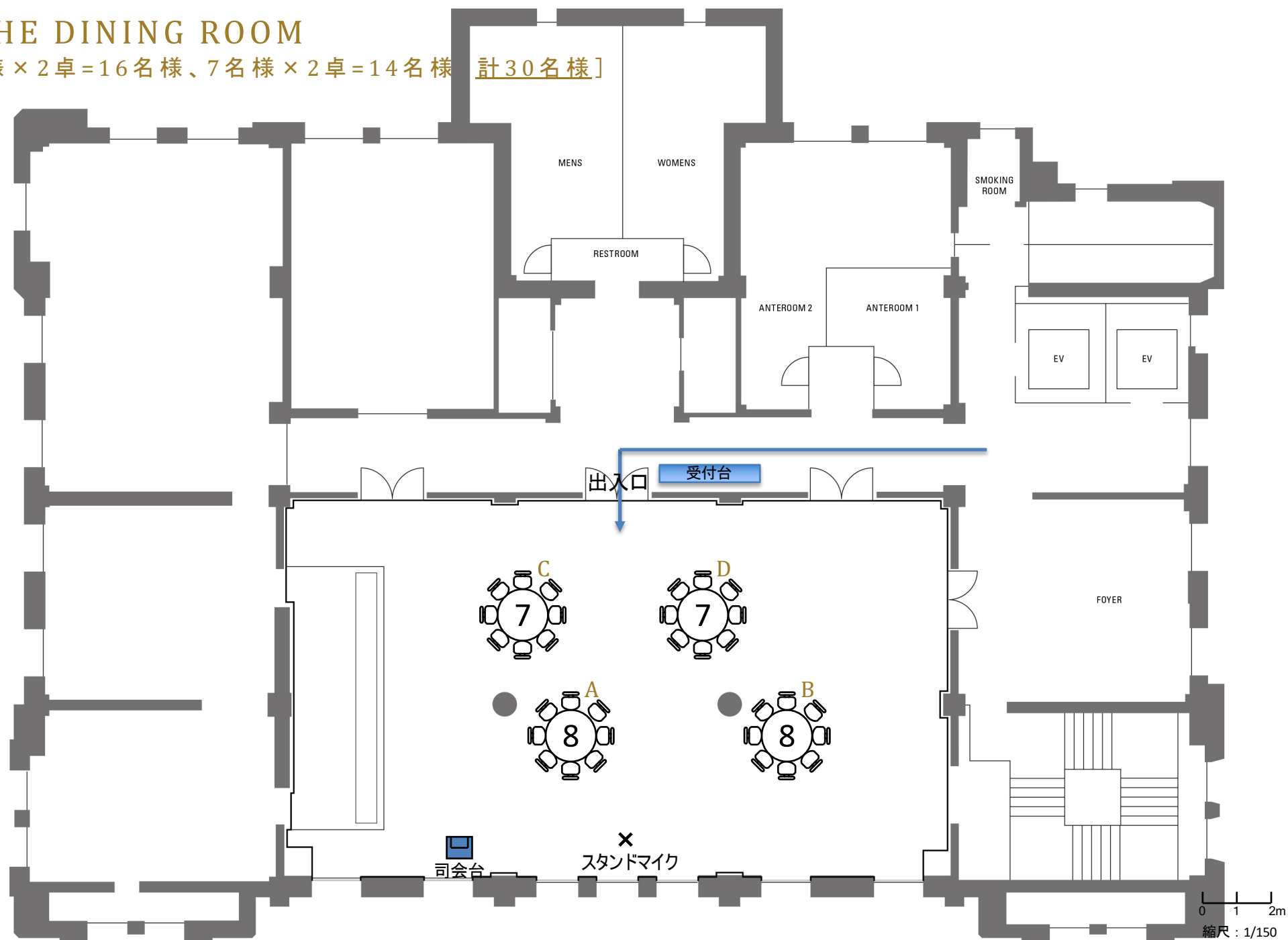
4F THE DINING ROOM

[7名様×2卓=14名様、6名様×1卓=6名様 計20名様]



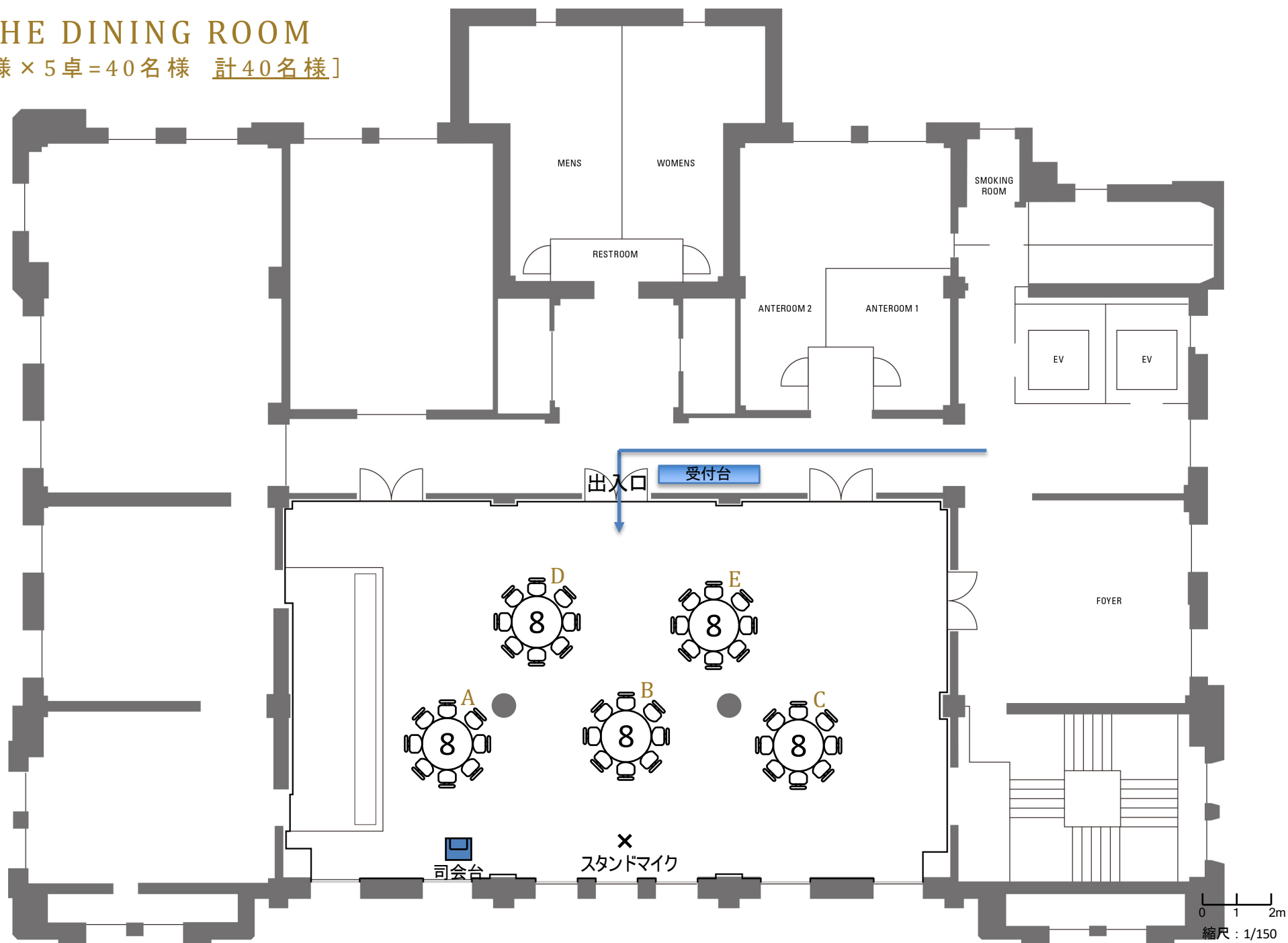
4F THE DINING ROOM

[8名様×2卓=16名様、7名様×2卓=14名様 計30名様]



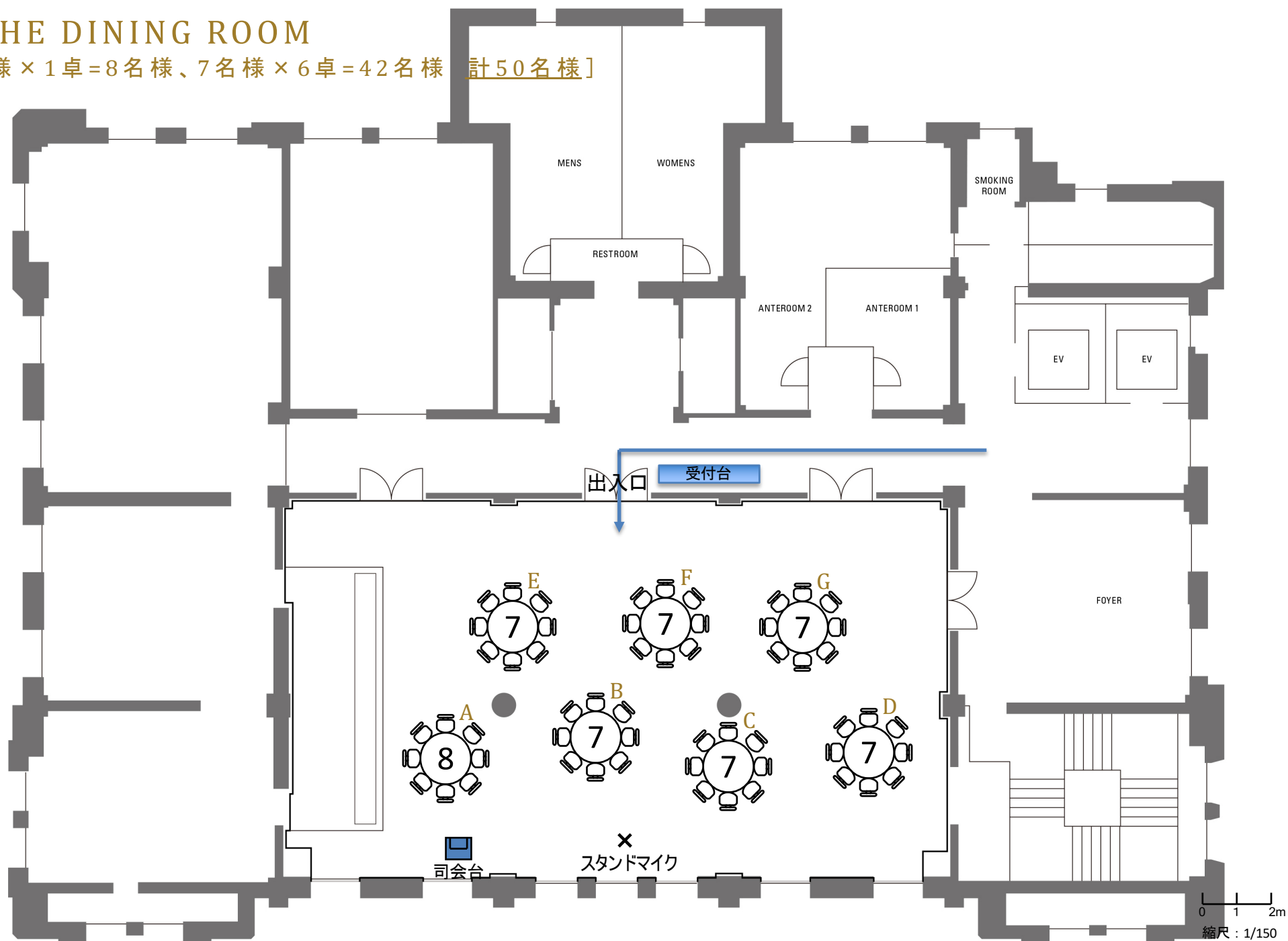
4F THE DINING ROOM

[8名様 × 5卓 = 40名様 計40名様]



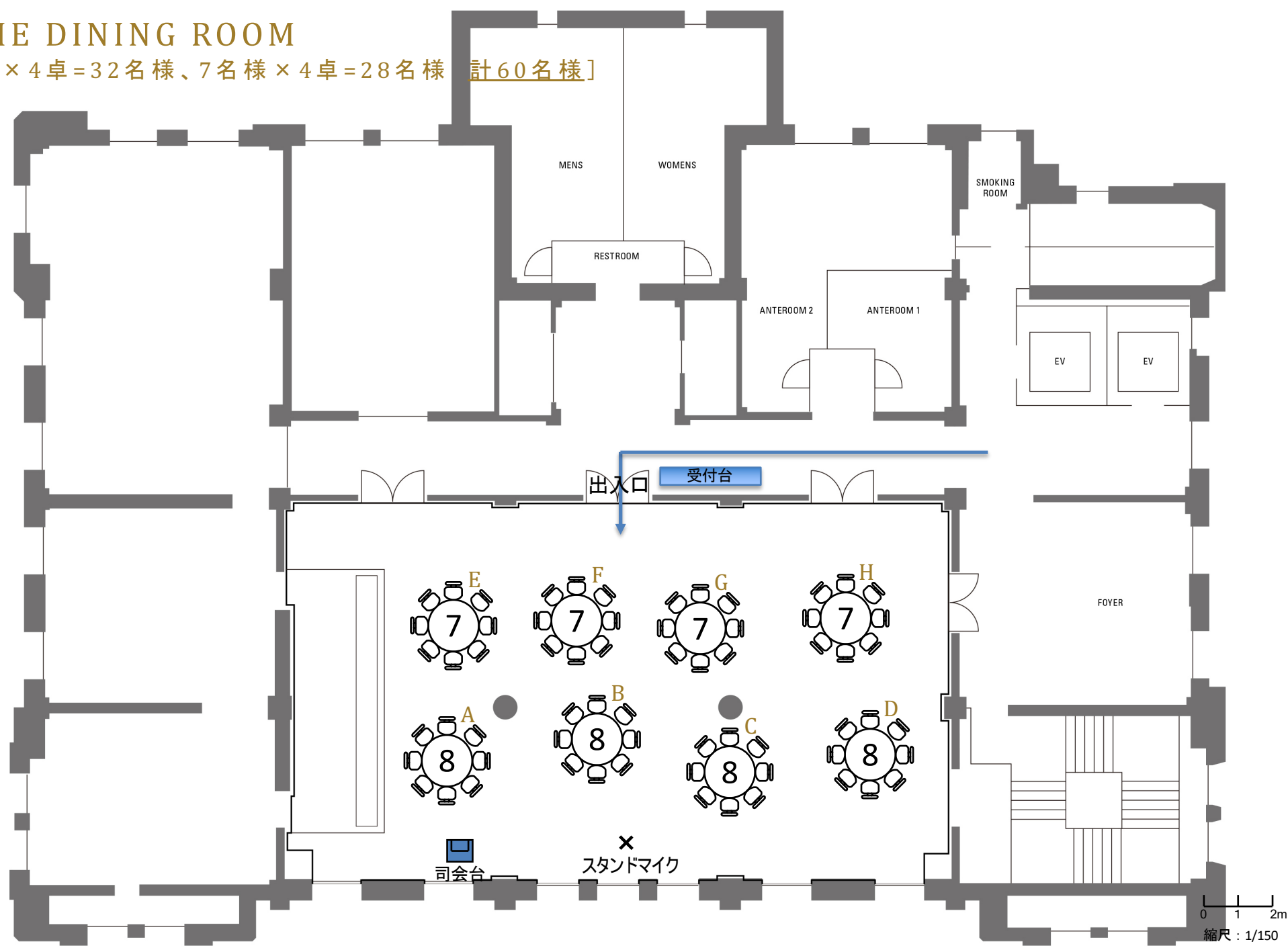
4F THE DINING ROOM

[8名様×1卓=8名様、7名様×6卓=42名様 計50名様]



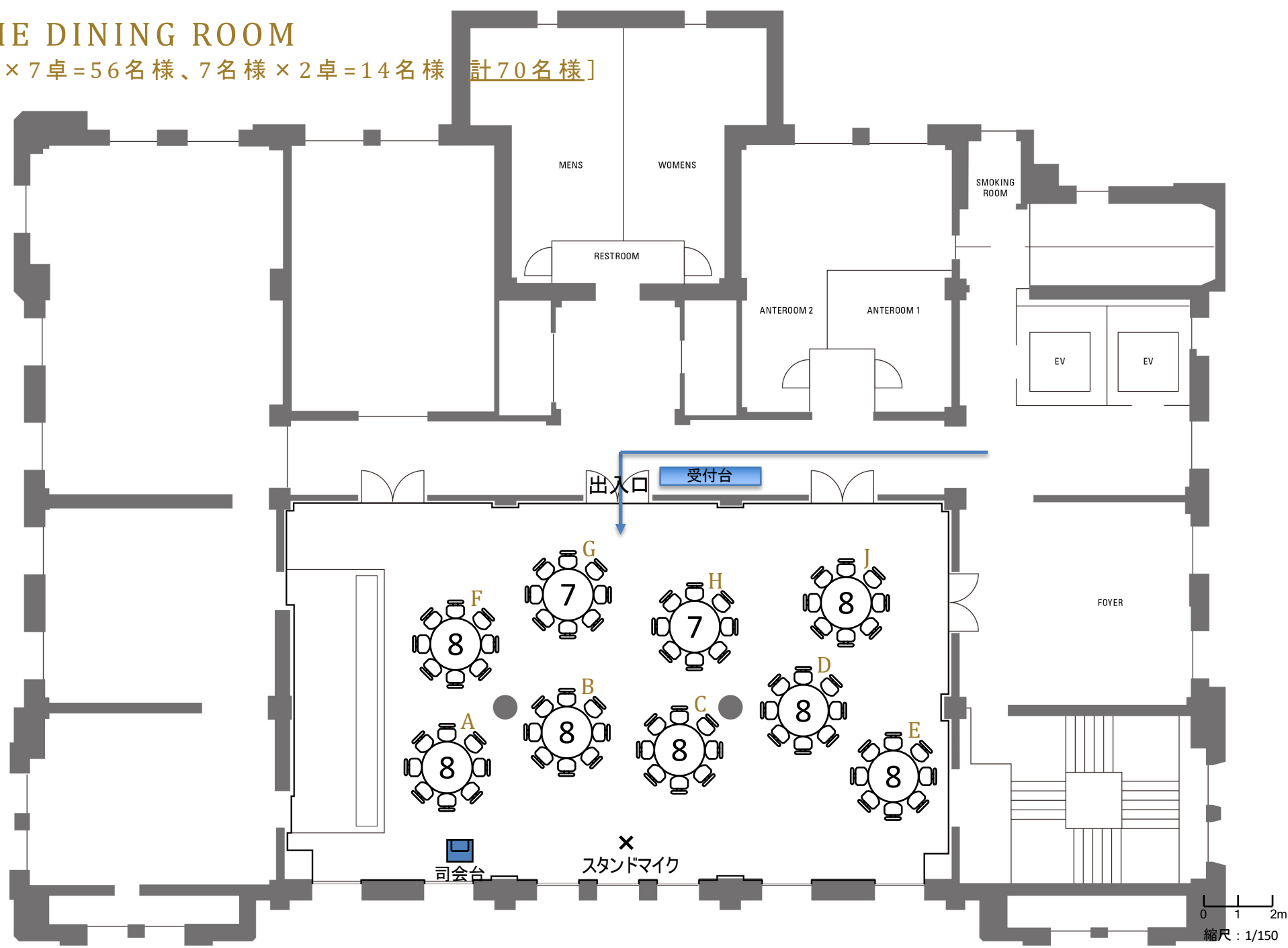
4F THE DINING ROOM

[8名様×4卓=32名様、7名様×4卓=28名様 計60名様]



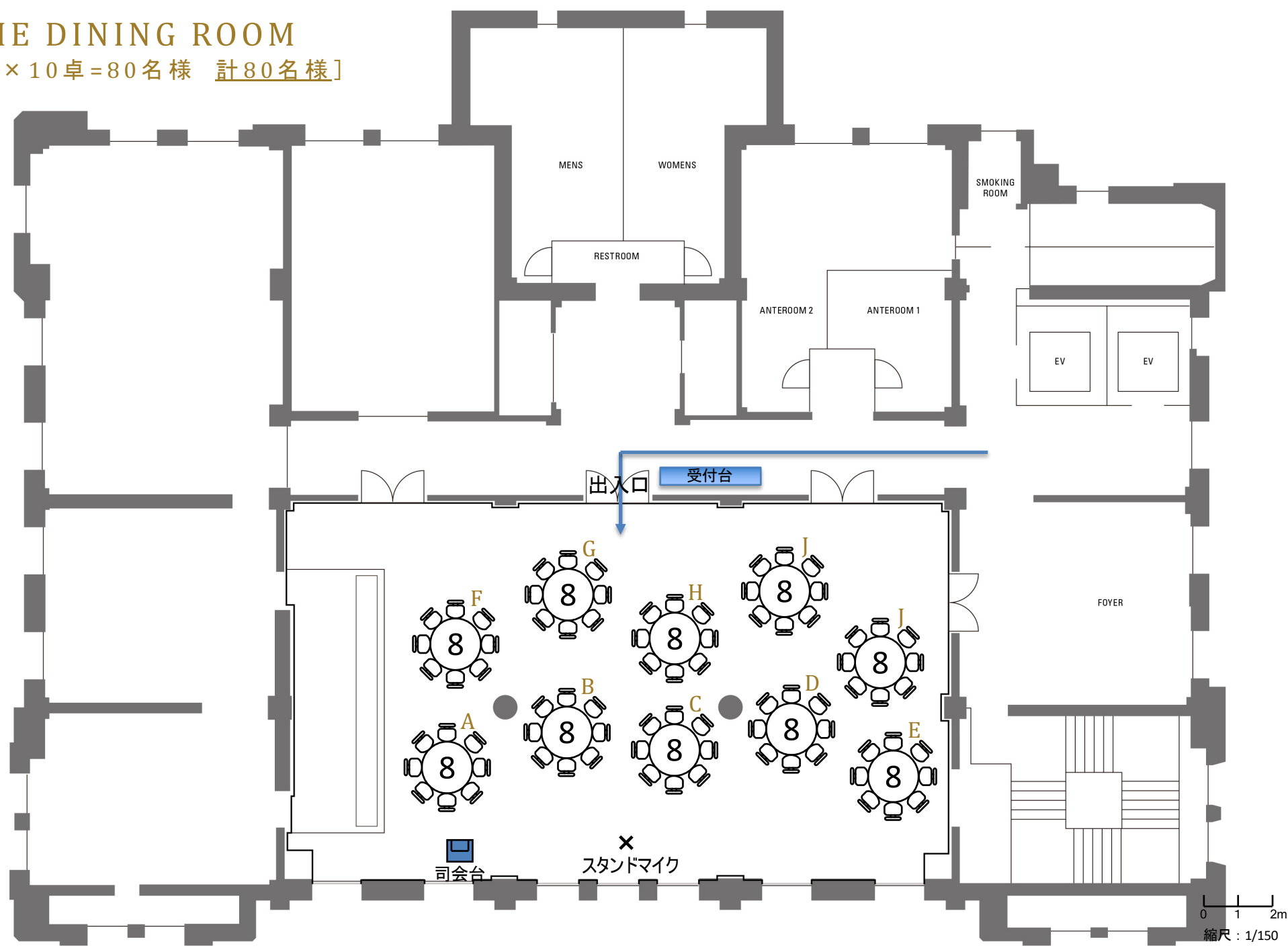
4F THE DINING ROOM

[8名様×7卓=56名様、7名様×2卓=14名様 計70名様]



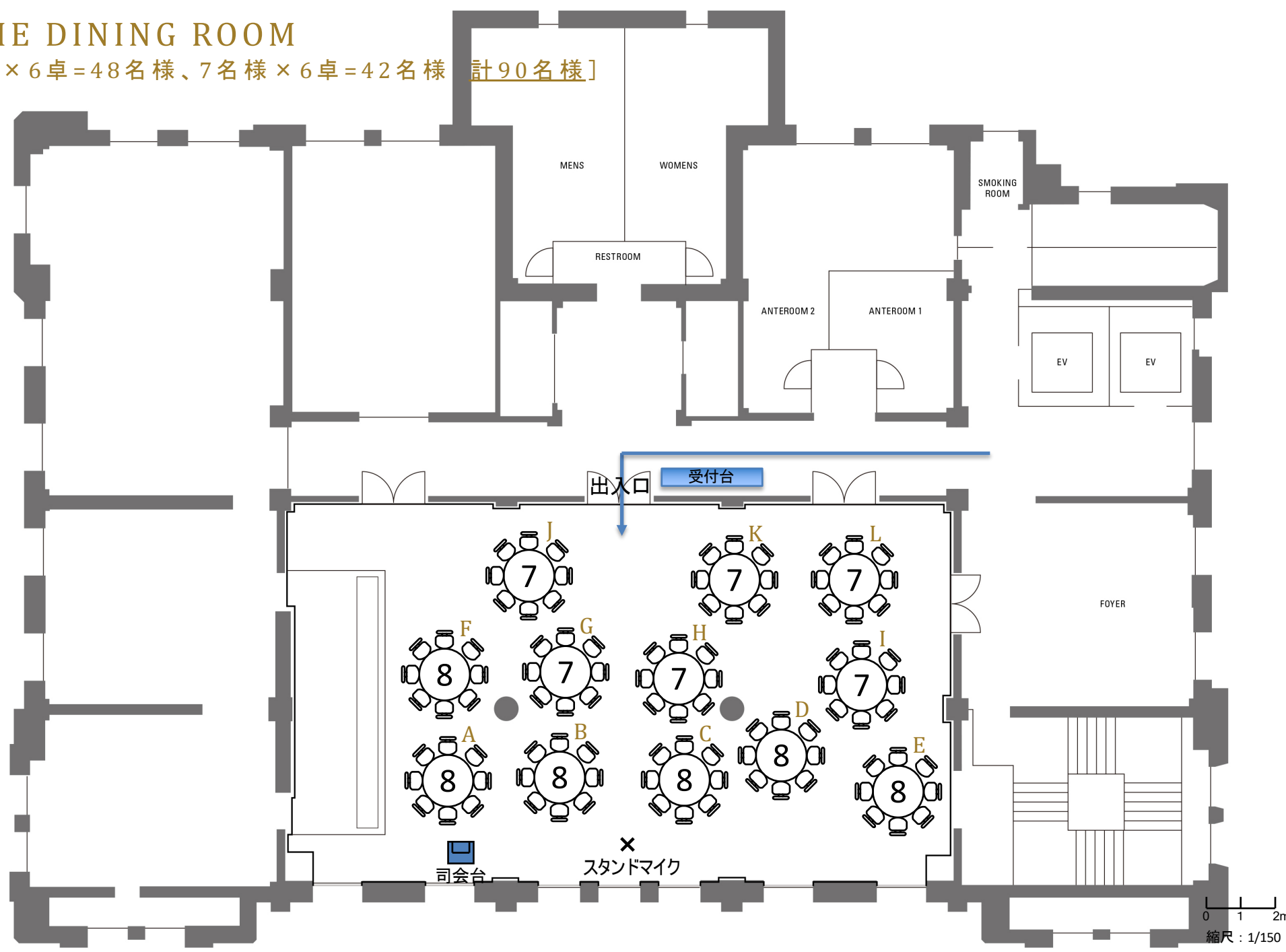
4F THE DINING ROOM

[8名様 × 10卓 = 80名様 計80名様]



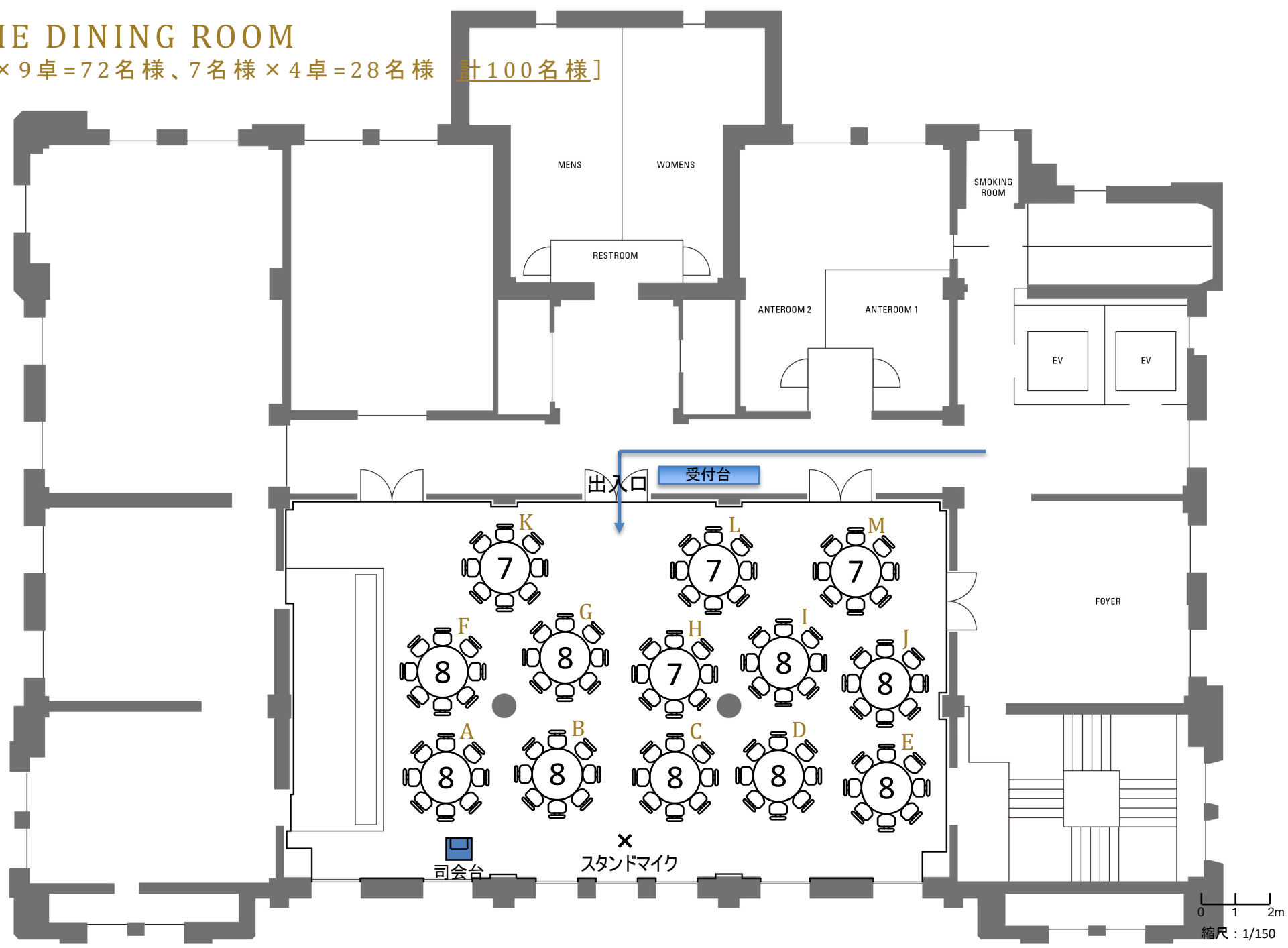
4F THE DINING ROOM

[8名様×6卓=48名様、7名様×6卓=42名様 計90名様]



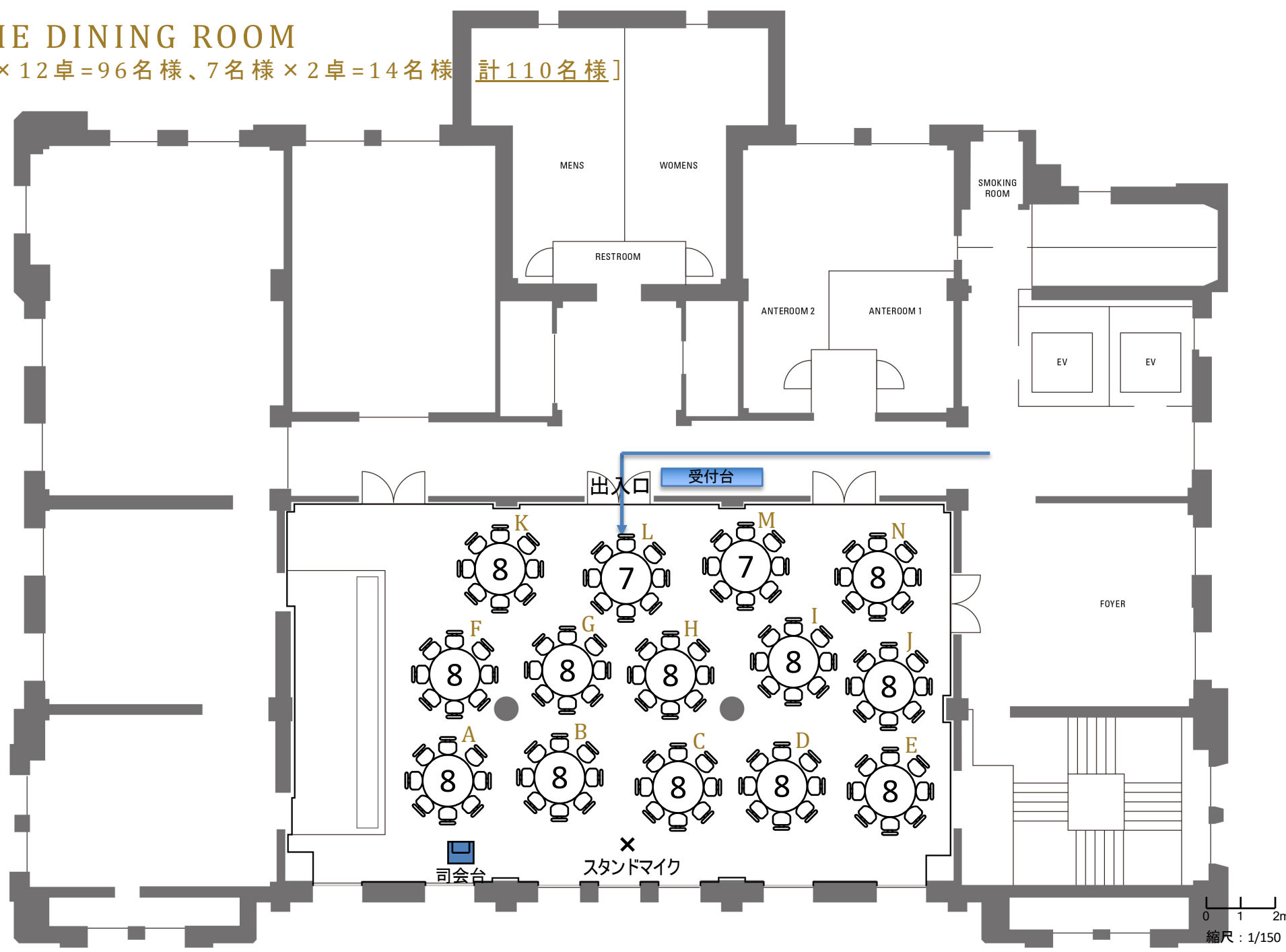
4F THE DINING ROOM

[8名様×9卓=72名様、7名様×4卓=28名様 計100名様]



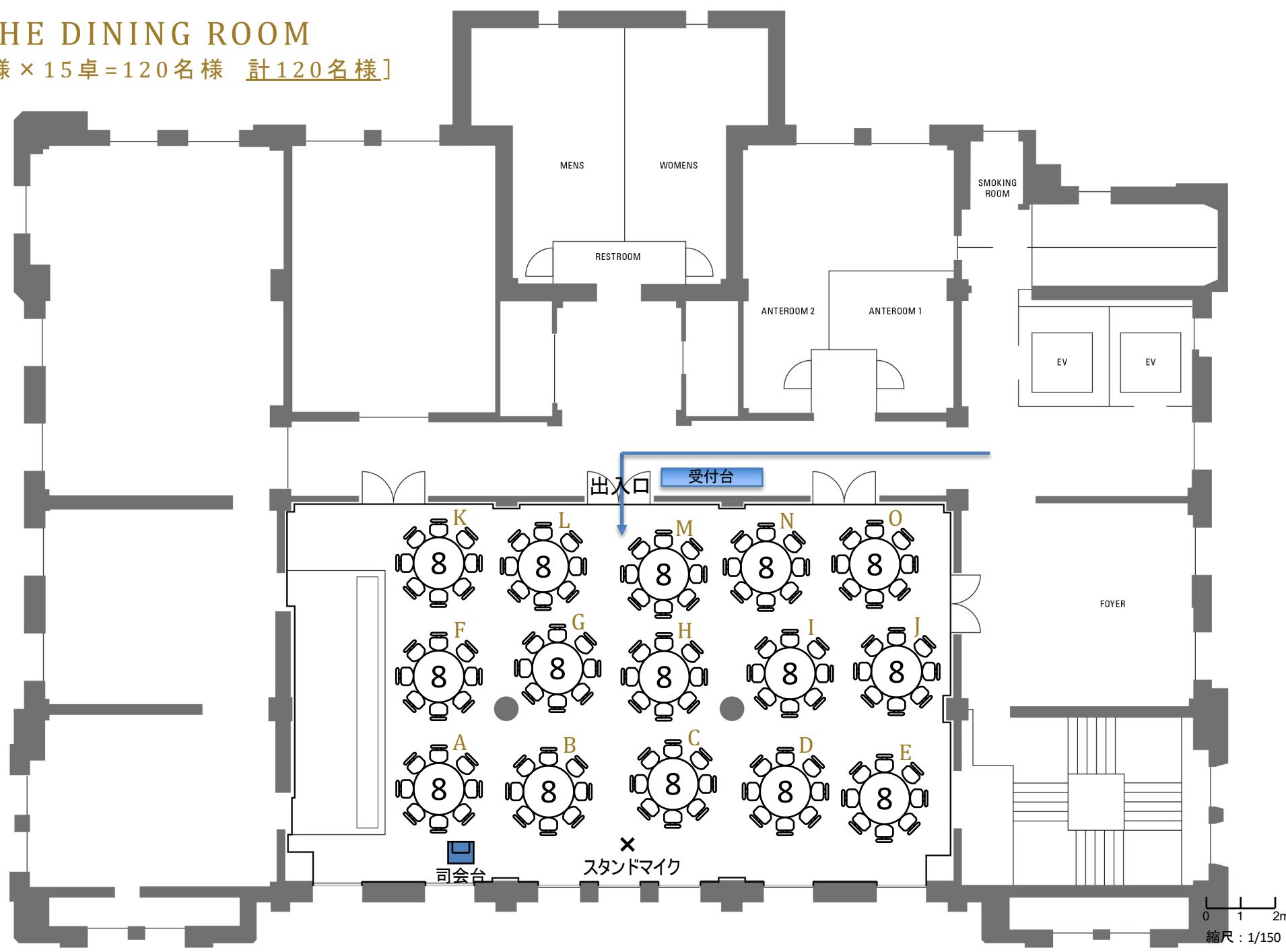
4F THE DINING ROOM

[8名様 × 12卓 = 96名様、7名様 × 2卓 = 14名様 計110名様]



4F THE DINING ROOM

[8名様 × 15卓 = 120名様 計120名様]



4F THE DINING ROOM

[9名様×6卓=54名様、8名様×9卓=72名様 計126名様]

